



Sewage Treatment Plants

Marine & Offshore



TECNICOMAR
WATERMAKERS - SEWAGE TREATMENT PLANTS

Leader provider of Marine Equipments.



ECOMAR S

Tecnicomar Sewage treatment plants are designed to be installed in typical marine environments, built to work in extreme conditions of temperature, humidity and vibrations.

Easy to run with totally automatic operation and the possibility to monitor the plants on remote integrating the working functionality with the on board existing systems.

Different sizes available covering a wide range of capacity to fulfill better all the needs of every kind of applications. System able to work with or without vacuum system on board.



Main ECOMAR S features:



EASY TO USE

Fully automatic operation with quick start up and no stabilization time required.



COMPACT DESIGN

Created specifically for all marine application with high treatment capacity.



LIGHTEST

Small footprint and strong polypropylene main units to save weight.



MULTIVOLTAGE

High efficiency components for a low Energy consumption, suitable for every power supply available on board.



CUSTOMIZABLE

Multi-tank control, different footprint, skid layout, dedicated accessories and other tailor made solution on request.



ECOMAR 20 S



ECOMAR 32 S



ECOMAR 45 S



ECOMAR 70 S



ECOMAR 145 S

ECOMAR S

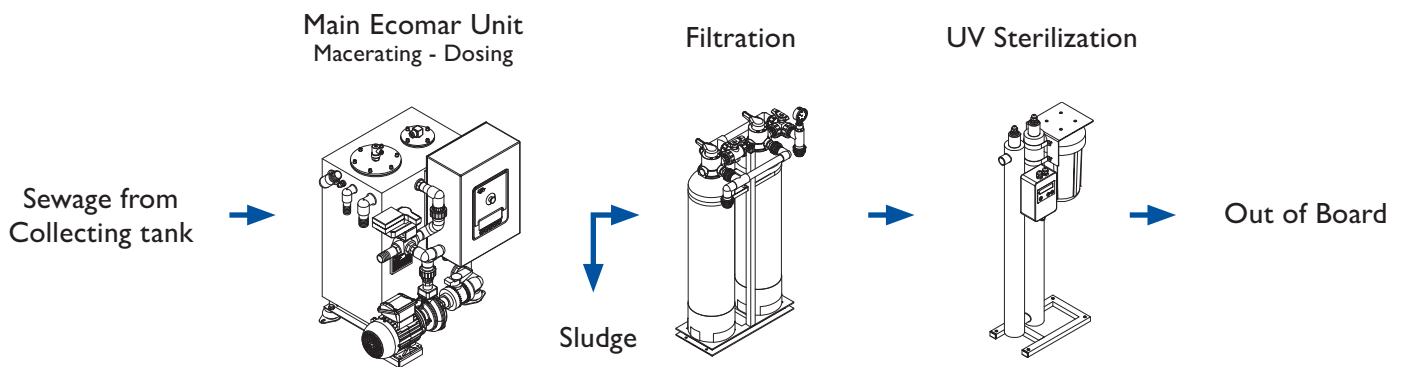
Technical Features

Technical specifications	ECOMar 20 S	ECOMar 32 S	ECOMar 45 S	ECOMar 70 S	ECOMar 145 S
Capacity (litres/day)*	2000	3200	4500	7000	14500
Power supply	230VAC-1Ph / 400VAC-3Ph – other voltages available on request				
Max Power consumption (kW)	0.7	0.7	1.2 / 1.6	1.2 / 1.6	1.2 / 1.6

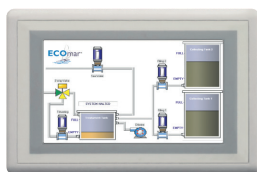
Dimensions and Weight

Main components dimensions (LxWxH) (m)	Main treatment unit	A316L config.	0.6x0.5x0.7	0.7x0.5x0.7	0.8x0.6x0.7	0.9x0.7x0.7	1.3x0.8x0.8
		PP config.	0.6x0.5x0.7	0.7x0.5x0.7	0.8x0.6x0.7	-	-
	Filtration station	0.6x0.3x1.1	0.6x0.3x1.1	0.6x0.3x1.1	0.6x0.3x1.1	0.6x0.3x1.1	
	Sterilization unit	0.4x0.2x0.9	0.4x0.2x0.9	0.5x0.2x0.9	0.5x0.2x0.9	0.5x0.2x0.9	
Total weight dry (kg)	A316L configuration	182.2	192.2	272.4	276.5	286.5	
	PP configuration	169	173.6	214.4	-	-	

ECOMar S Flow Diagram



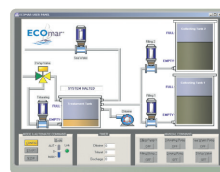
Optionals available on request:



7" LCD touch-screen remote control



CDMAR-2 remote control



Remote control by on-board PC



Air purifier by advanced air oxidation to eliminate bad odors

MODBUS protocol available

Our International presence

Leader in the market since 1978 thanks to strong business relationships with local partners worldwide. This established global network of skilled technicians allows us to provide a direct support and the best service to all our final customers.



TECNICOMAR S.p.A.

Head Office and Factory: 91025 MARSALA (TP), ITALY - C.da Berbaro, 145/D S.S. 115 Km. 36,4

GPS coordinates: 37°45'9.78"N - 12°28'46.14"E

Phone (+39) 0923 969409 - Fax (+39) 0923 960235

Subsidiary: 55049 VIAREGGIO (LU) - Via M. Coppi no, 67 - Phone / Fax (+39) 0584 395408

tecnicomar.it | info@tecnicomar.it



APPROVED